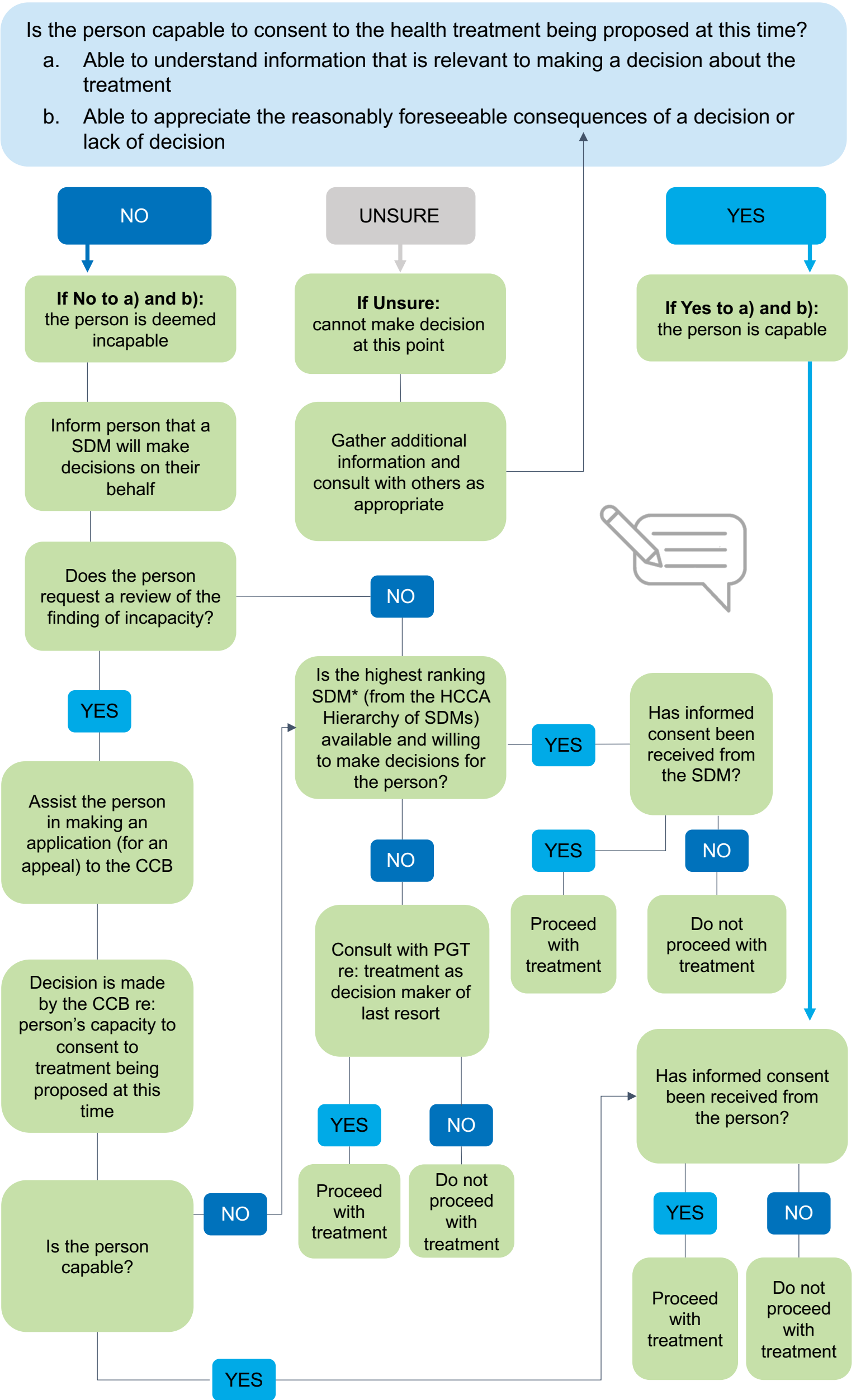


Determining Capacity Decision Tree

Capacity Decision Tree to determine who provides informed consent
Health Care Consent Act, 1996



SDM – Substitute decision-maker
CCB – Consent and Capacity Board
PGT – Public Guardian and Trustee
HCCA – Health Care Consent Act

*If there are multiple SDMs of equal ranking, then the health practitioner may suggest to the group to collectively make a decision or appoint one individual to be the lead in communicating with the health practitioner (as it applies within the practice setting).

This decision tree does not contemplate all scenarios but is intended to be a general guide to consent issues.